



LANSON PLACE

WATERFRONT SUITES  
HONG KONG

## Welcome home to Lanson Place Waterfront Suites

Your fully-furnished personal residence  
at the vibrant East Side neighbourhood

[lansonplace.com](https://lansonplace.com)



The Wellness Pool  
Ground Floor

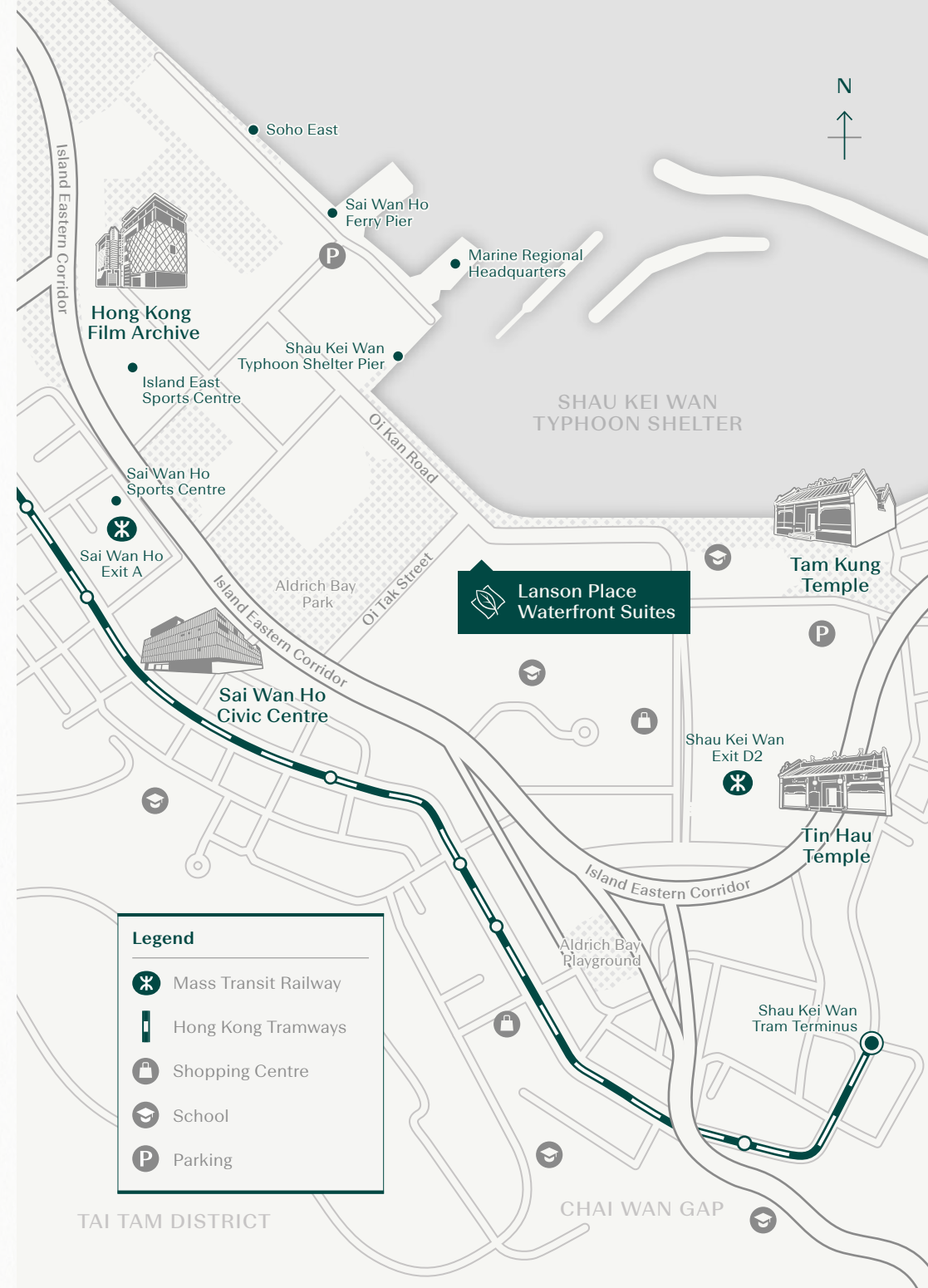
## Your Neighbourhood

# East Side

The waterfront neighbourhood from Sai Wan Ho to Shau Kei Wan has fast-established itself as a prime residential location for young professionals, who are drawn to its runner-friendly promenades, convenient shopping, lively bar and restaurant scene, and a colourful community mixing old and new, local and cosmopolitan.



The Eastern Harbourfront  
View from Gym'brary, 1<sup>st</sup> Floor



## Neighbourhood Highlights

# Eat

### **Soho East**

The best kept secret for the city's foodies – a gastronomic haven of quaint cafes, seaside bars and Michelin-starred eateries.

# Work

### **Island East CBD**

Home to Hong Kong's fastest growing cluster of prime commercial buildings, choice address for financial conglomerates to creative agencies.

# Unwind

### **Cityplaza and more**

Never a dull moment in the sprawling network of malls with extensive choice of lifestyle brands, eateries and cinemas.

# Learn

### **Tradition meets Avant Garde**

Revisit the New Wave at the Hong Kong Film Archive, or take a walk in a historic fort housing the Museum of Coastal Defence.



Scan for further recommendations  
or visit [lansonplace.com/waterfrontsuites](https://lansonplace.com/waterfrontsuites)



Soho East – a gastronomic haven, the best kept secret for Hong Kong's food lovers.



## Your Personal Residence

---

Perched on the very edge of the Eastern Waterfront, Lanson Place Waterfront Suites affords the best of both worlds: a haven of tranquility and the vibrant lifestyles of East Side. As your devoted hosts, we offer you warm, homey and private spaces you love to return to, plentiful social venues to engage with other guests, and attentive services personalised for your wants and needs.

Welcome home to Lanson Place Waterfront Suites.



Your Personal Residence

## Studio

A great option for discerning travellers and short-term guests. Our studio apartment – with its marbled bathroom, corner kitchenette and mini dining table – has a cosy, practical layout designed for those with a penchant for modern elegance.



Floorplan



Gross area 345-408 ft<sup>2</sup>

**In-room amenities** Bosch blender, SMEG kettle, Panasonic rice cooker, Nespresso coffee machine and capsule, iron and ironing board, safe deposit box, Sealy mattress, bathroom toiletries upon arrival



Apple TV & Smart TV



High Speed Fiber Internet



iPad Controlled Amenities



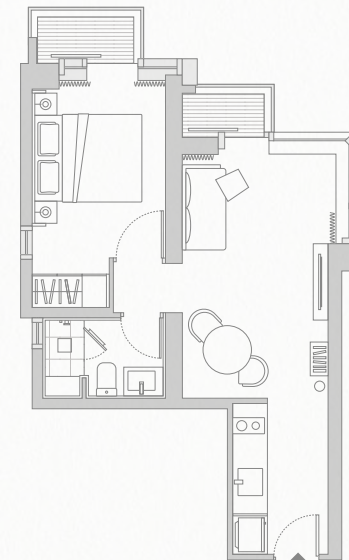
Your Personal Residence

# 1-Bedroom

Sink into comfy splashes of Nordic cool in the apartment's lofty, balconied living room, and revel in the harbour's calmness as you laze in a bespoke sofa. Life is a breeze in this perfect ensuite designed for residence or longer-term travellers.



Floorplan



Gross area 526-573 ft<sup>2</sup>

**In-room amenities** Bosch blender, SMEG kettle, Panasonic rice cooker, Nespresso coffee machine and capsule, iron and ironing board, safe deposit box, Sealy mattress, bathroom toiletries upon arrival



Apple TV & Smart TV



High Speed Fiber Internet



iPad Controlled Amenities



Washing & Drying Machine



Your Personal Residence

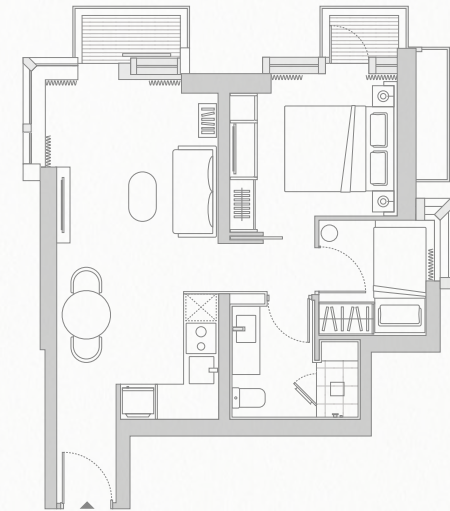
## 2-Bedroom

Enjoy the extra bedroom you get to house an extra guest, extra clothes, or an extra member of your clan. Relish in plush, modern upholstery as you enjoy Hong Kong's fabulous skyline.

Reach out for the banquette at the base of the glass facade for quiet reading and cup-of-tea moments. In our 2-bedroom apartment, the world seems to come together.



Floorplan



Gross area 665-713 ft<sup>2</sup>

**In-room amenities** Bosch blender, SMEG kettle, Panasonic rice cooker, Nespresso coffee machine and capsule, iron and ironing board, safe deposit box, Sealy mattress, bathroom toiletries upon arrival



Apple TV & Smart TV



High Speed Fiber Internet



iPad Controlled Amenities



Mini Wine Cellar



Washing & Drying Machine





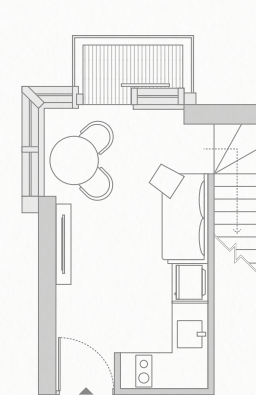
Your Personal Residence

# 1-Bedroom Duplex

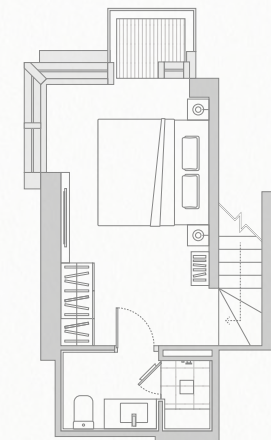
Indulge in a complete escape on the top floors of our building, where the harbour feels bluer, and more dazzling. With the bedroom now separated by an elegant internal staircase, unwinding and unplugging has never been easier. Floor-to-ceiling glass facade, bespoke retro-style wooden furniture, and a fully-equipped corner kitchen: enjoy this pure luxury and the best in the East.



Floorplan



Living Room



Bedroom

Gross area 623-706 ft<sup>2</sup>

**In-room amenities** Bosch blender, SMEG kettle, Panasonic rice cooker, Nespresso coffee machine and capsule, iron and ironing board, safe deposit box, Sealy mattress, bathroom toiletries upon arrival



Apple TV & Smart TV



High Speed Fiber Internet



iPad Controlled Amenities



Washing & Drying Machine



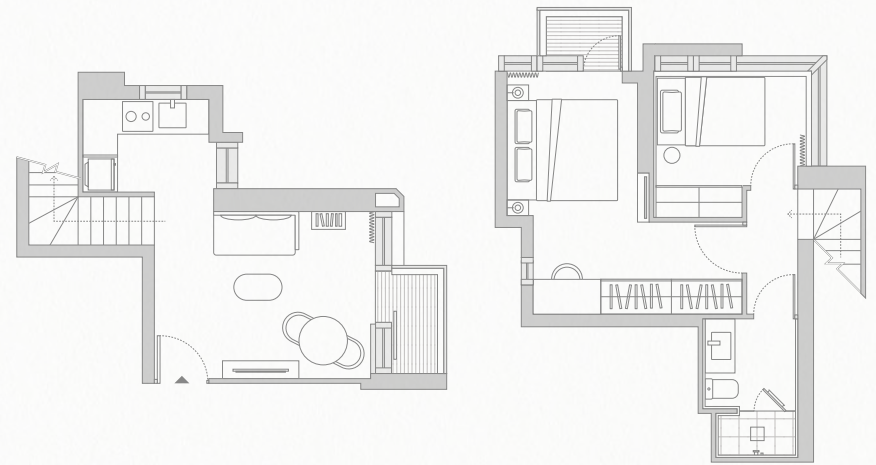
Your Personal Residence

## 2-Bedroom Duplex

The most coveted option for discerning couples or a small family with children. Live Life as you've always dreamt it: Sink into a cocoon of bespoke elegance and simply forget about your worries. Enjoy a luxury division of private spaces, with ensuite bedroom and master bedroom on the bottom floor. Drink in the stunning panorama as you lounge away the day surrounded by Nordic furnishing and modern upholstery, reading or simply contemplating.




Floorplan




Living Room

Bedrooms

Gross area 852-916 ft<sup>2</sup>

  
Apple TV  
& Smart TV

  
High Speed  
Fiber Internet

  
iPad Controlled  
Amenities

  
Mini  
Wine Cellar

  
Washing &  
Drying Machine

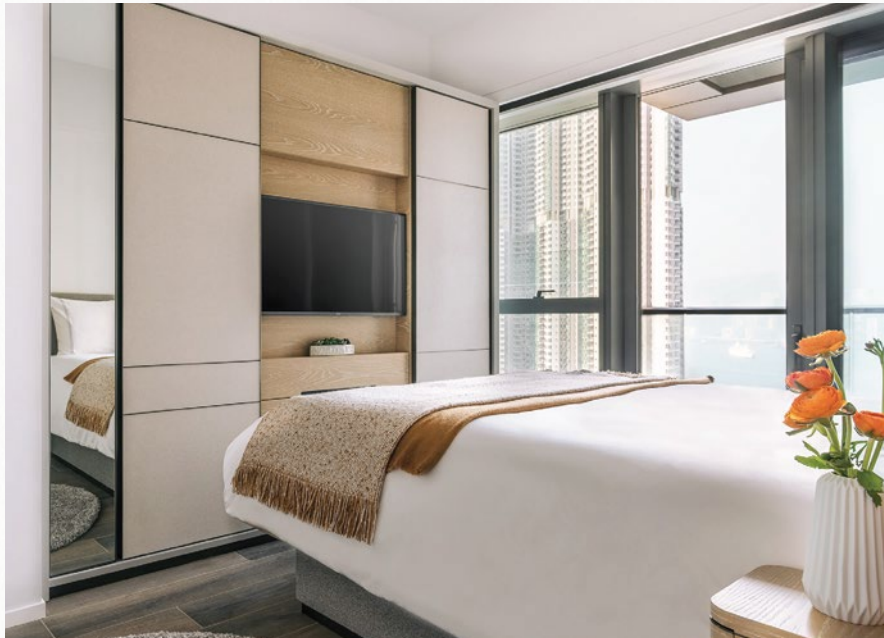
**In-room amenities** Bosch blender, SMEG kettle, Panasonic rice cooker, Nespresso coffee machine and capsule, iron and ironing board, safe deposit box, Sealy mattress, bathroom toiletries upon arrival



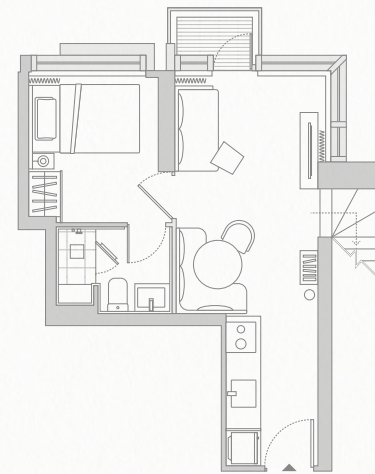
Your Personal Residence

# 2.5-Bedroom Duplex

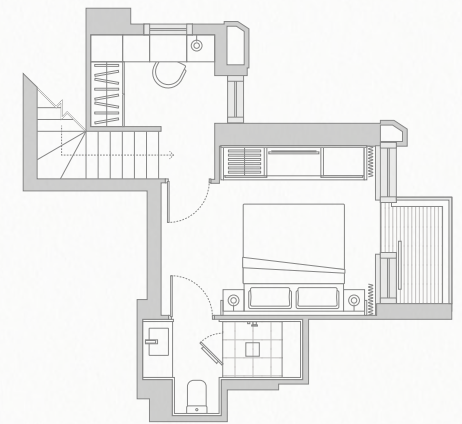
The most coveted option possible for discerning couples or a mini clan with children. With stunning panoramic views wrapped around the whole unit, enjoy a luxury division of private spaces with an ensuite bedroom below, and a master bedroom above.



Floorplan



Living Room & Bedroom



Bedroom

Gross area 949 ft<sup>2</sup>

**In-room amenities** Bosch blender, SMEG kettle, Panasonic rice cooker, Nespresso coffee machine and capsule, iron and ironing board, safe deposit box, Sealy mattress, bathroom toiletries upon arrival



Apple TV & Smart TV



High Speed Fiber Internet



iPad Controlled Amenities



Mini Wine Cellar



Washing & Drying Machine



## Your Extended Lifestyle

---

Discover a world within at Lanson Place Waterfront Suites. Relax, indulge, or mingle at our many functional and leisure areas, each serving as an intimate extension of your personal space. Our service team is dedicated to perfecting every detail for that effortless comfort that remind you of home.



### **Lounge**

Serving complimentary grab-and-go breakfast in the morning and cocktails and canapés in the evening, this is where you relax and meet new friends.

### **Gym'brary**

The 24-hour gym-cum-library offers full mind & body workout with state-of-the-art weight-training equipment and optional personal training, and a library of curated books and journals.

### **Wellness Pool & BBQ Area**

An outdoor plunge pool equipped with a swim jet soothes and stretches. The poolside offers also the perfect space to work on your tan, or host BBQ parties.

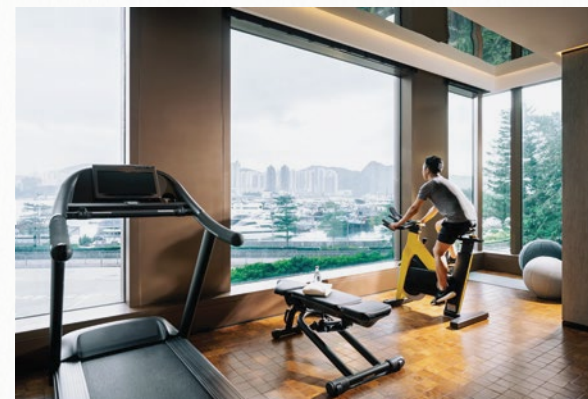
### **Yoga'rden**

Attune your body and mind through yoga or meditation in a quiet enclave designed to be an oasis for the soul. Simply ask us if you need a yoga instructor.

Your Day at Lanson Place Waterfront Suites

## Services & Amenities

Grab a breakfast to go as you head out for an adventure in the city, and let our housekeeping work their magic while keeping everything in its rightful place. Take our shuttle to key Island-side locations, and return in time to enjoy a complimentary evening cocktail with delightful company. There's even time to squeeze in your night-time workout, with a personal trainer that we'll be happy to recommend.



## Transportation Network

# Getting Around

Just 5 minutes' walk from Sai Wan Ho and Shau Kei Wan MTR Stations, Lanson Place Waterfront Suites offers easy access to key island side locations. Take the tram for a scenic ride to the busy Island West, or the ferry to the up-and-coming CBD2 in Kwun Tong. Meanwhile, proximity to key highways means most of Hong Kong is easily accessible.



- Sai Wan Ho**  
5 mins walk to MTR Station  
The go-to for local street food and barista coffee, as well as the al fresco bar & dining of Soho East, a vibrant area drawing young hipsters to office workers.
- Taikoo**  
3 mins by MTR  
Home to Cityplaza, one of Hong Kong's largest shopping complexes offering eclectic shopping, eateries and art experiences.
- Quarry Bay**  
5 mins by MTR  
The East Side's main business district, Quarry Bay attracts a cluster of fast-growing firms in the finance, new media and creative industries.
- Causeway Bay**  
15 mins by MTR  
Where the hip, the luxurious, the exciting and the latest mingle. Shop in global brand flagships and find curios in street-side stalls; enjoy omakase or sip on bubble tea as you roam the alleys; or soak in culture in multi-storey bookstores and art spaces.
- Admiralty**  
16 mins by MTR  
More than just an office and shopping hub, Admiralty is also the interchange to South Island line offering quick access to Ocean Park and the beautiful beaches of Island South.
- Central**  
20 mins by MTR  
The bustling business heart of the city, home to the coveted bar scene of Lan Kwai Fong and the city's most prized cultural gems: Tai Kwun, 'antique street' of Hollywood Road, Fringe Club and more.

# Useful Information

## Transportation

MTR

[mtr.com.hk](http://mtr.com.hk)

KMB

[kmb.hk](http://kmb.hk)

Citibus

[nwstbus.com.hk](http://nwstbus.com.hk)

Tram

[hktramways.com](http://hktramways.com)

## Tourist Information

Hong Kong Tourism Board

[discoverhongkong.com](http://discoverhongkong.com)

Hong Kong Observatory

[hko.gov.hk](http://hko.gov.hk)

Lanson Place Waterfront Suites  
1 Oi Tak Street, Shau Kei Wan, Hong Kong

+852 2178 2288  
[enquiry.wfhk@lansonplace.com](mailto:enquiry.wfhk@lansonplace.com)



Scan for further recommendations  
or visit [lansonplace.com/waterfrontsuites](http://lansonplace.com/waterfrontsuites)

[lansonplace.com](http://lansonplace.com)