



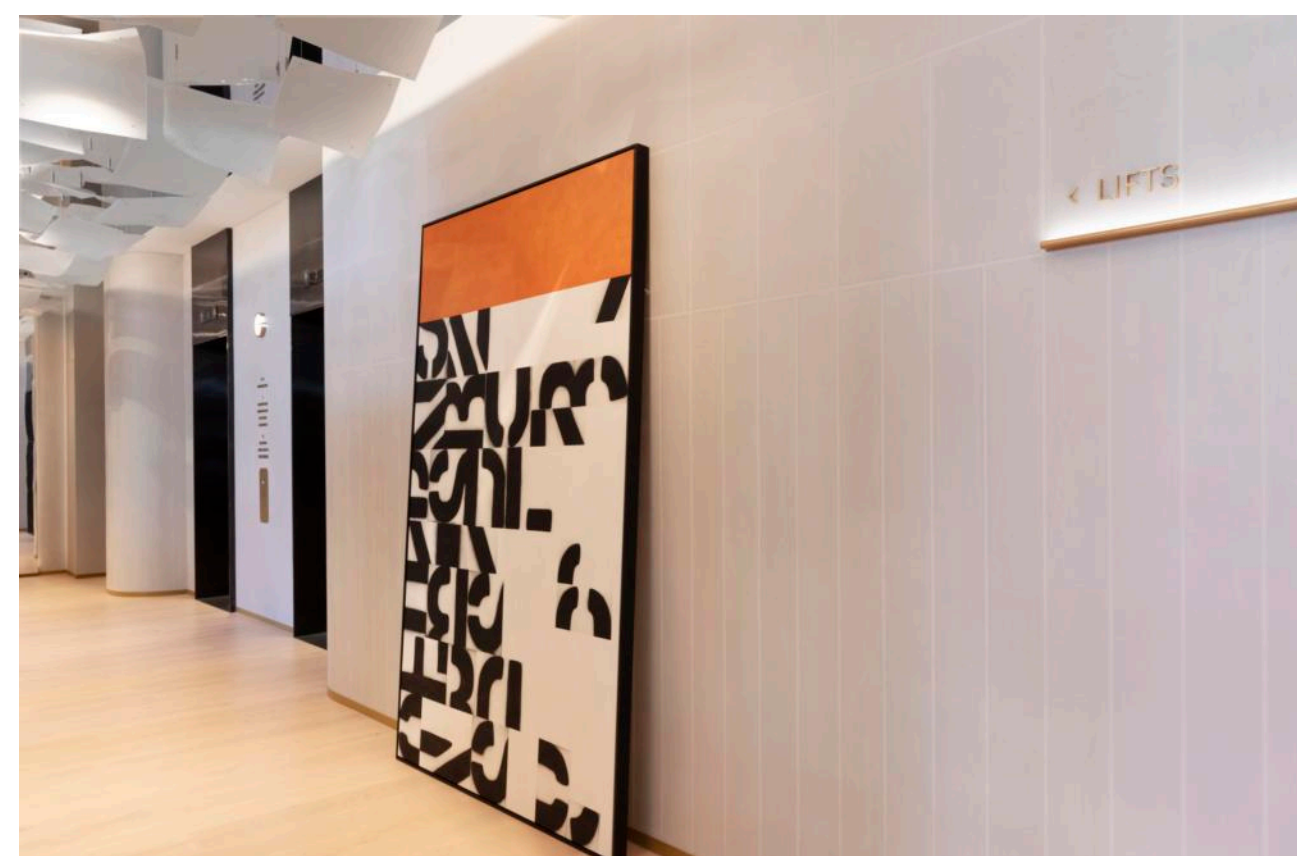
LANSON PLACE

PARLIAMENT GARDENS
MELBOURNE

Welcome home to

Lanson Place Parliament Gardens

Experience sophistication at the top end of Melbourne's CBD, where heritage architecture seamlessly merges with modern design to create a hotel of distinguished character.





Parliament Gardens and the City
View from Penthouse, 14th floor

Discover Melbourne

On the edge of the CBD, our location provides the perfect place to explore Melbourne's renowned café culture, vibrant dining scene, majestic theatres, sports precincts and bustling commercial centre. Lanson Place Parliament Gardens is where you can experience the essence of Melbourne, all within walking distance.





Chronicle 502 Bar & Dining,
Ground floor

The best of the city is
at your door,
waiting to be discovered.

Wine & Dine

Situated on the hotel's ground floor is Chronicle 502 Bar & Dining, a fresh addition to Melbourne's vibrant food and wine scene. Brunswick Street, Lygon Street, Chinatown and the city are all within a short walk to explore some of Melbourne's finest restaurants.

Explore & Unwind

Find your perfect escape in Melbourne – just a short stroll or tram ride away from the city's iconic laneways, premier shopping, and dining experiences, while enjoying the serenity of lush gardens right at your doorstep.

Sporting & Cultural Capital

Located within Melbourne's world-class sports and entertainment precincts. From the historic Princess, Comedy and Her Majesty's theatres to the grounds of the MCG or centre court at Rod Laver Arena.

Shopping Central

Melbourne's celebrated retail scene is yours to explore, whether shopping along the 'Paris end' of Collins Street, browsing new trends at Emporium or picking out fresh produce from the Queen Victoria Market.

A Timeless Place

You'll find echoes of the 1901 building's rich past throughout the design of the hotel, from grand restored arched windows overlooking Parliament Gardens to the stunning 40-metre ceiling installation of Chronicle 502 Bar & Dining. Inspired by the native Melaleuca paperbark tree, the layers peel away like a manuscript, gliding gracefully across the centre of the lobby linking back to its heritage as the Salvation Army Printing Works.





Hotel Room – King/Twin

Filled with natural light, our hotel room exudes comfort and convenience. From a deluxe King or two Single beds, premium amenities to the contemporary style and versatility of a dining table that doubles as a workstation, these rooms are meticulously designed to deliver a relaxing stay.



Smart TV



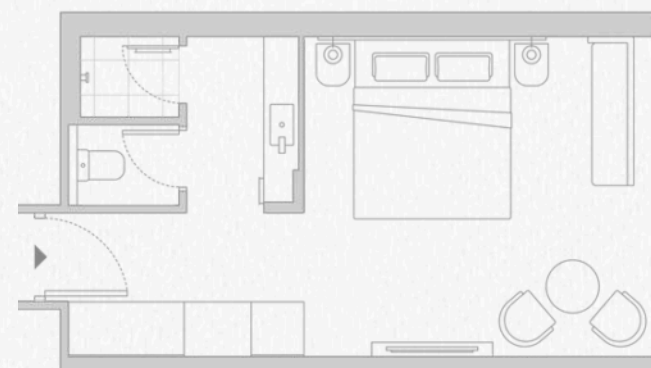
High Speed Wi-Fi

In Room Amenities

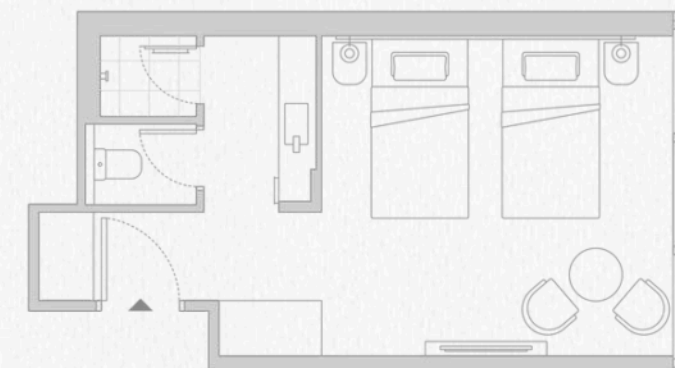
Nespresso® Coffee Machine, T2 Tea, Russell Hobbs kettle, microwave, Dyson hairdryer, iron and ironing board, safe deposit box, Sealy mattress, extensive pillow menu, Appelles bathroom toiletries

Floor Plan

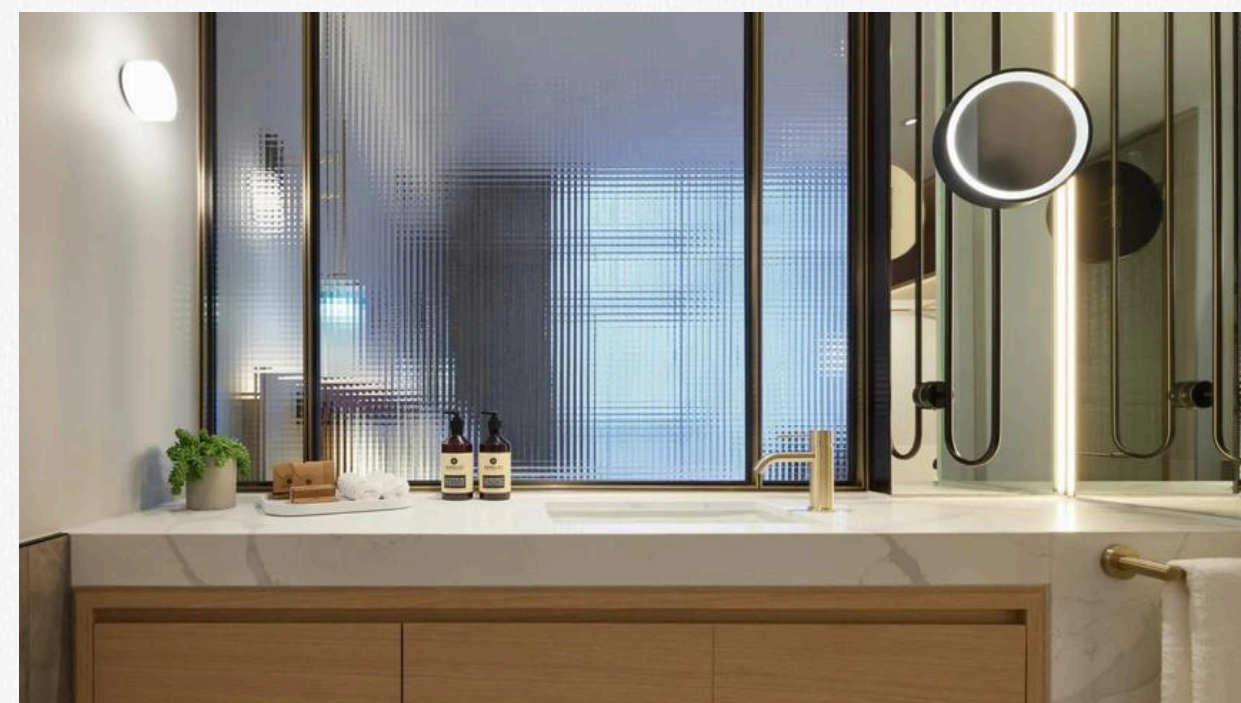
Gross Area | 28-32m²

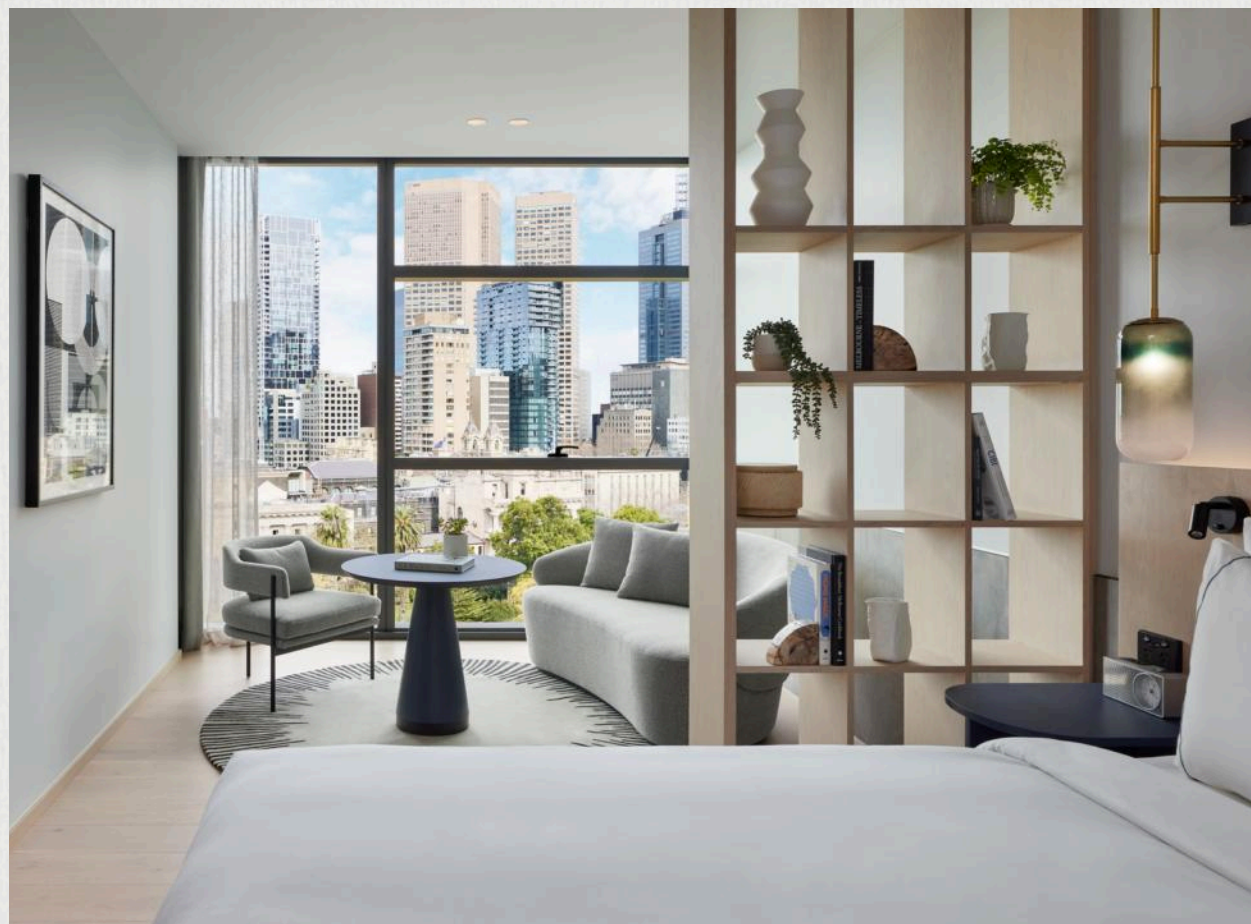


King



Twin





Studio – King/Double Queen

Whether you're with us for a few days or a little longer, your studio offers the perfect blend of space and comfort. The open-plan layout features a deluxe King or double Queen beds, well-equipped kitchenette, a dining table that doubles as a workstation, and convenient laundry facilities. A thoughtfully designed bookshelf with elegant decor creates a subtle separation between the bedroom and lounge area. With floor-to-ceiling windows, each studio enjoys abundant natural light with views of Parliament Gardens or the city.



Smart TV



High Speed Wi-Fi

In Room Amenities

Nespresso® Coffee Machine, T2 Tea, Miele 2 burner cooktop, pots and pans, bar fridge, Russell Hobbs kettle & toaster, microwave, rice cooker, Ninja blender, Dyson hairdryer, washer/dryer, iron and ironing board, safe deposit box, Sealy mattress, extensive pillow menu, Appelles bathroom toiletries

Floor Plan

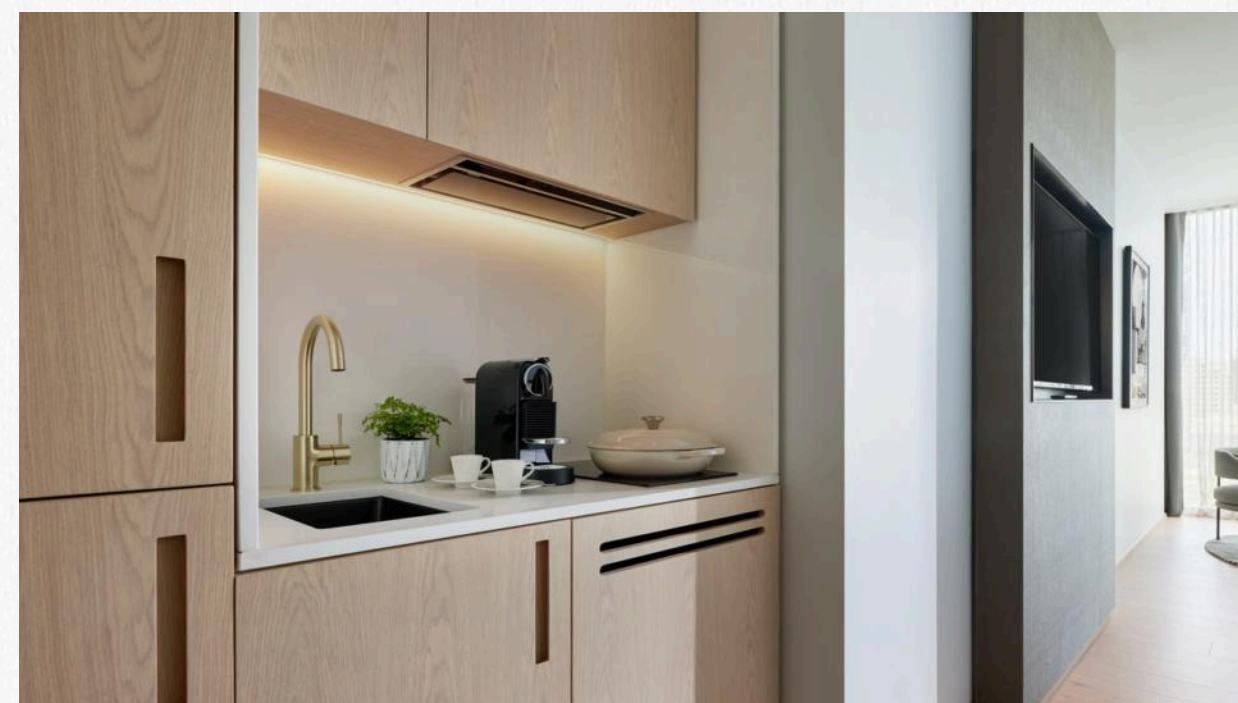
Gross Area | 33m²



King



Double Queen





One Bedroom Apartment

Indulge in the sophistication of apartment living during your extended Melbourne stay. After exploring the city, unwind in the open-plan living room or prepare a meal in the kitchen using fresh produce from the famous Queen Victoria Market, and sink into the deluxe King bed for a restful night's sleep.

Laundry facilities add to the convenience and comfort of these contemporary homes-away-from-home.



Smart TV



High Speed Wi-Fi

In Room Amenities

Nespresso® Coffee Machine, T2 Tea, Miele 2 burner cooktop, pots and pans, Miele Combi oven, Fisher & Paykel fridge & freezer, Russell Hobbs kettle & toaster, rice cooker, Ninja blender, Miele dishwasher, Dyson hairdryer, washer/ dryer, iron and ironing board, safe deposit box, Sealy mattress, extensive pillow menu, Appelles bathroom toiletries

Floor Plan

Gross Area | 40-50m²





Heritage One Bedroom Loft

Ideal for a weekend retreat or romantic getaway, our heritage one-bedroom lofts span two levels, delivering an elevated experience for your next stay. Truly a hidden gem in Melbourne's CBD, our lofts blend historic charm with modern elegance. Downstairs, you'll find an open-plan kitchen, living and dining area, powder room, and laundry facilities. Upstairs, a deluxe King bed is complemented by an ensuite with walk-in shower and separate bath. Our lofts offer a true sanctuary of tranquility (note spelling) and sophistication, providing every convenience you'll need.



Smart TV



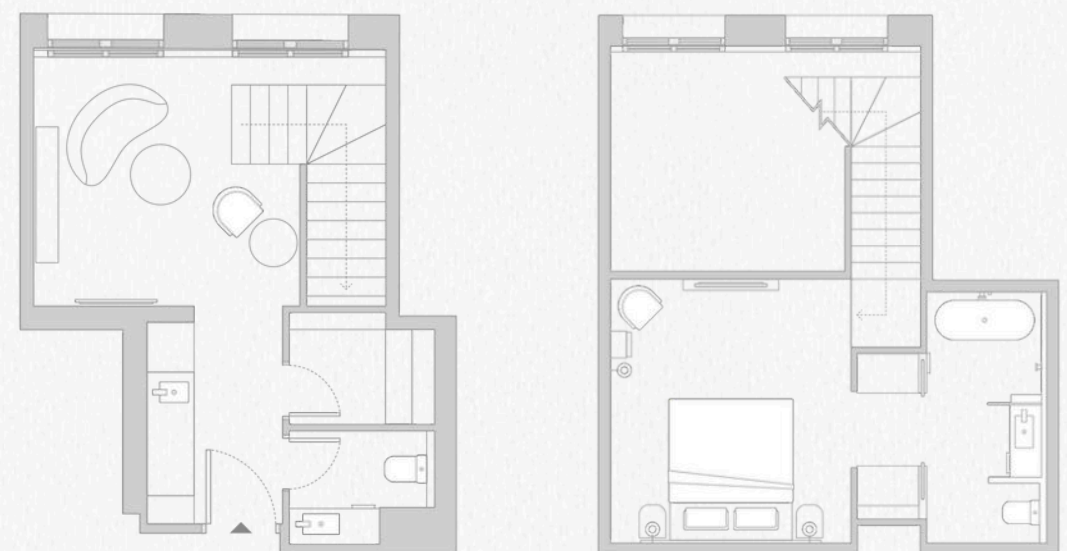
High Speed Wi-Fi

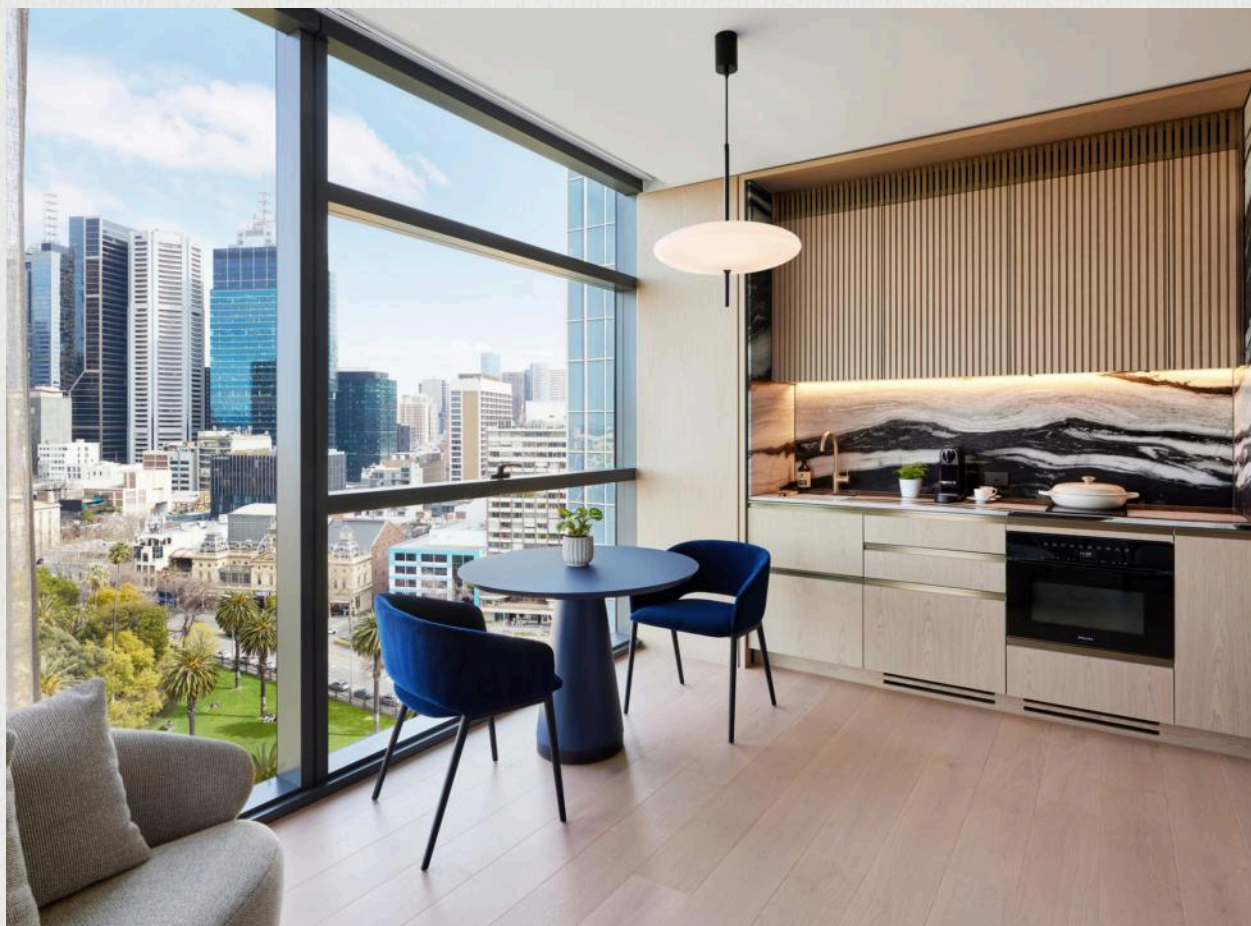
In Room Amenities

Nespresso® Coffee Machine, T2 Tea, Miele 2 burner cooktop, pots and pans, Miele Combi oven, Fisher & Paykel fridge & freezer, Russell Hobbs kettle & toaster, rice cooker, Ninja blender, Miele dishwasher, Dyson hairdryer, washer/ dryer, iron and ironing board, safe deposit box, Sealy mattress, extensive pillow menu, Appelles bathroom toiletries

Floor Plan

Gross Area | 40-50m²





Premium One Bedroom Apartment

Our premium one-bedroom apartments open out to expansive views of the city and the tranquil beauty of Parliament Gardens. An all-inclusive living and dining area sets the scene for relaxing on the couch, working at the dining table or cooking in the kitchen. These apartments feature a deluxe King bed, an elegant bathroom with walk-in shower, separate bath, and laundry facilities.

It's the thoughtful extra touches of sophistication that make your stay with us truly exceptional.



Smart TV



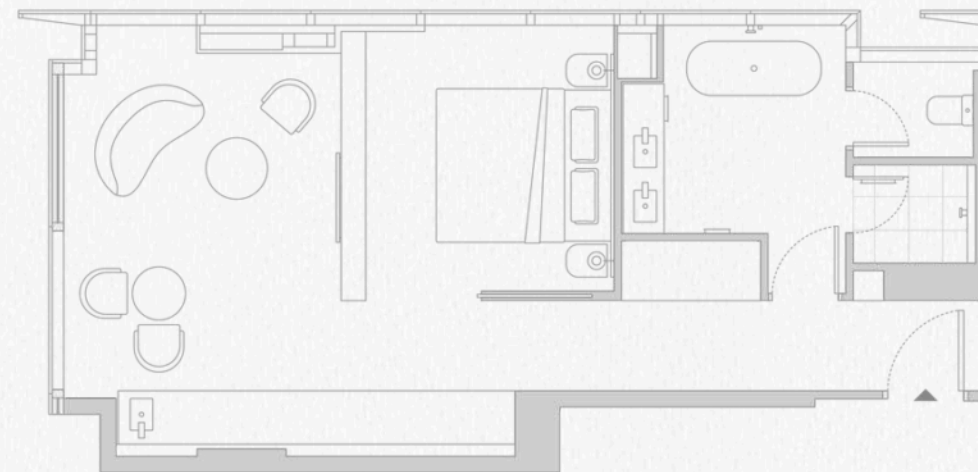
High Speed Wi-Fi

In Room Amenities

Nespresso® Coffee Machine, T2 Tea, Miele 2 burner cooktop, pots and pans, Miele Combi oven, Fisher & Paykel fridge & freezer, Russell Hobbs kettle & toaster, rice cooker, Ninja blender, Miele dishwasher, Dyson hairdryer, washer/ dryer, iron and ironing board, safe deposit box, Sealy mattress, extensive pillow menu, Appelles bathroom toiletries

Floor Plan

Gross Area | 40-50m²





Heritage Two Bedroom Apartment

Our heritage two-bedroom, two-bathroom apartments offer a spacious open-plan kitchen, living and dining area, perfect for an extended family getaway or couple's retreat. Located in the historic part of our building, these beautifully appointed apartments feature two deluxe King beds or a King and two Single beds, an elegant ensuite with separate bath, fully equipped kitchen, and convenient laundry facilities. Enjoy ample space and comfort, with charming garden and city views through classic heritage windows.



Smart TV



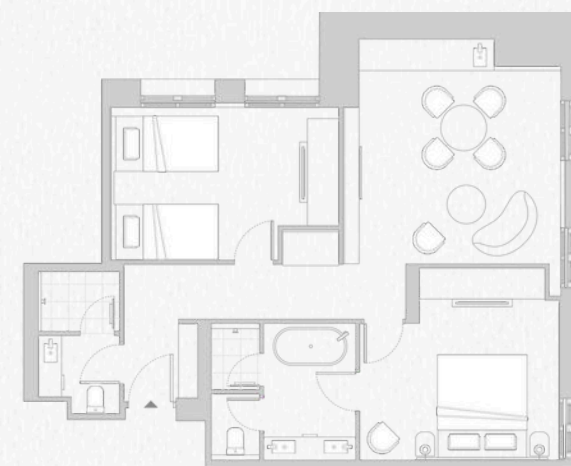
High Speed Wi-Fi

In Room Amenities

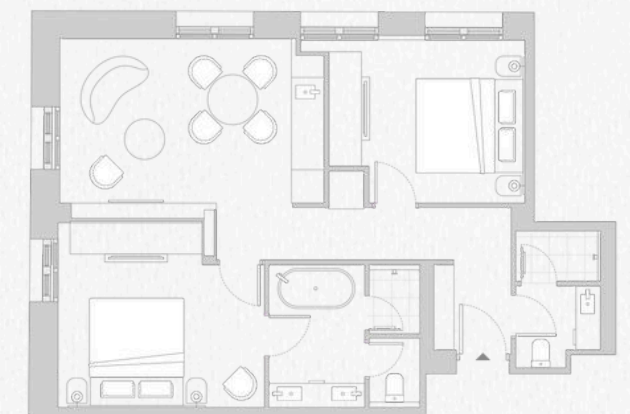
Nespresso® Coffee Machine, T2 Tea, Miele 2 burner cooktop, pots and pans, Miele Combi oven, Fisher & Paykel fridge & freezer, Russell Hobbs kettle & toaster, rice cooker, Ninja blender, Miele dishwasher, Dyson hairdryer, washer/ dryer, iron and ironing board, safe deposit box, Sealy mattress, extensive pillow menu, Appelles bathroom toiletries

Floor Plan

Gross Area | 82-87m²



King+Twin



King+King



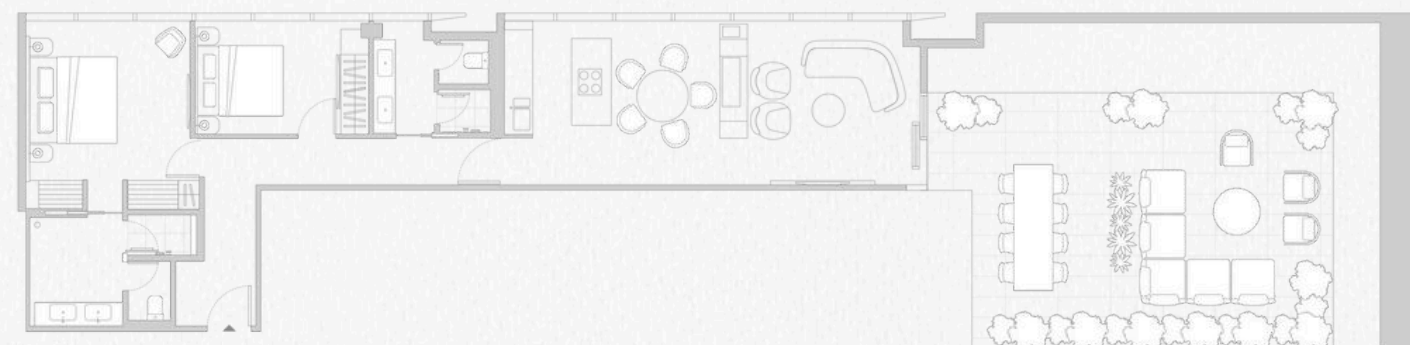


In Room Amenities

Nespresso® Coffee Machine, T2 Tea, complimentary minibar, Miele 4 burner cooktop, pots and pans, Miele Combi oven, Fisher & Paykel fridge & freezer, Vintec 20 bottle wine cabinet, Smeg kettle & toaster, , rice cooker, Breville blender, Miele dishwasher, Dyson hairdryer, washer/ dryer, iron and ironing board, safe deposit box, Sealy mattress, extensive pillow menu, Appelles bathroom toiletries

Floor Plan

Gross Area | 100m²



Executive Two Bedroom Penthouse

Experience an elevated level of sophistication in one of our two penthouses. Positioned on the top floor, the Executive Two Bedroom Penthouse commands panoramic views over Parliament Gardens towards the city skyline and beyond.

The opulent interior features two bedrooms, two bathrooms, fully equipped kitchen with an island bench, five-seater dining table and a spacious living area opening to an expansive outdoor terrace. The master bedroom features a deluxe Super King bed, an ensuite with double sinks, walk-in shower and separate bath.

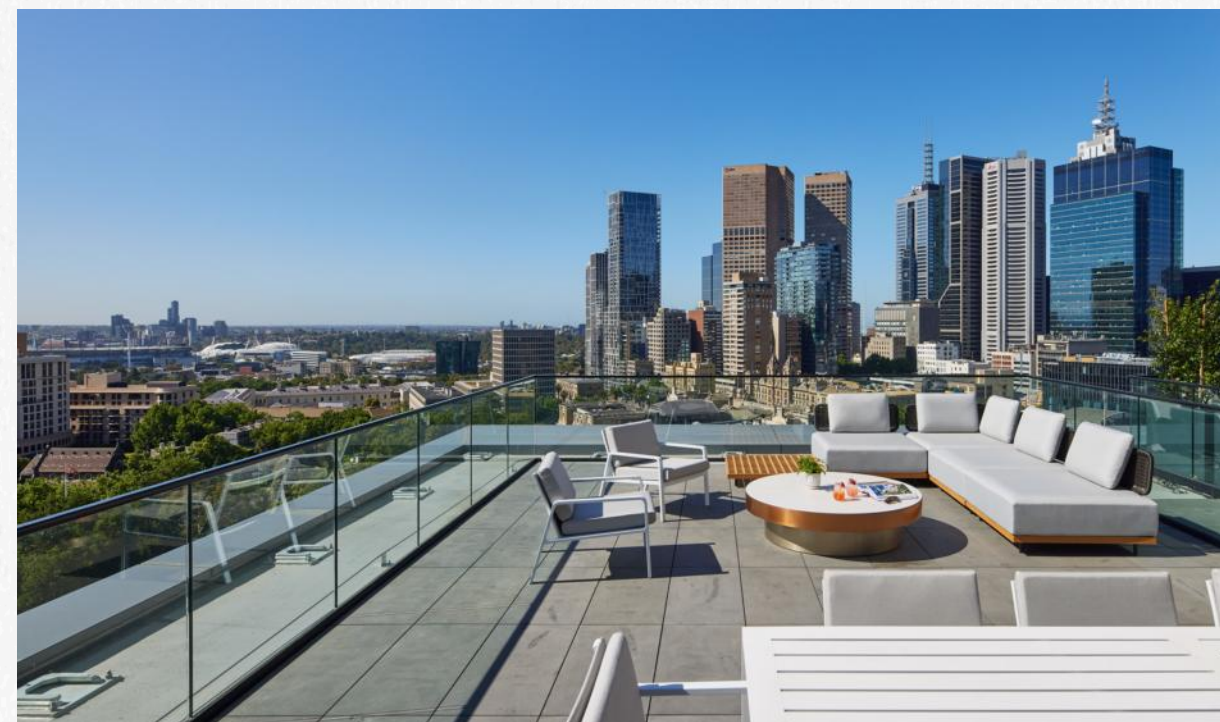
The second bedroom offers a Queen bed, creating the ideal setting for families or groups seeking the ultimate Melbourne stay.



Smart TV



High Speed Wi-Fi





Premium Two Bedroom Penthouse

Discover the height of Melbourne's renowned hospitality in our Premium Two Bedroom Penthouse. Here, unmatched personal service combines with panoramic views of Parliament Gardens, the city skyline and beyond. Spread out across two bedrooms with ensuites, a full kitchen with a butler's pantry, a ten-seater dining table, and an expansive lounge opening to the grand outdoor terrace. The two elegantly appointed bedrooms include a Super King bed in the master bedroom with an ensuite, walk-in shower and separate bath, with a second bedroom offering two singles and an ensuite. The scene is set for a stay in absolute indulgence where you can experience the city at its very best.



Smart TV



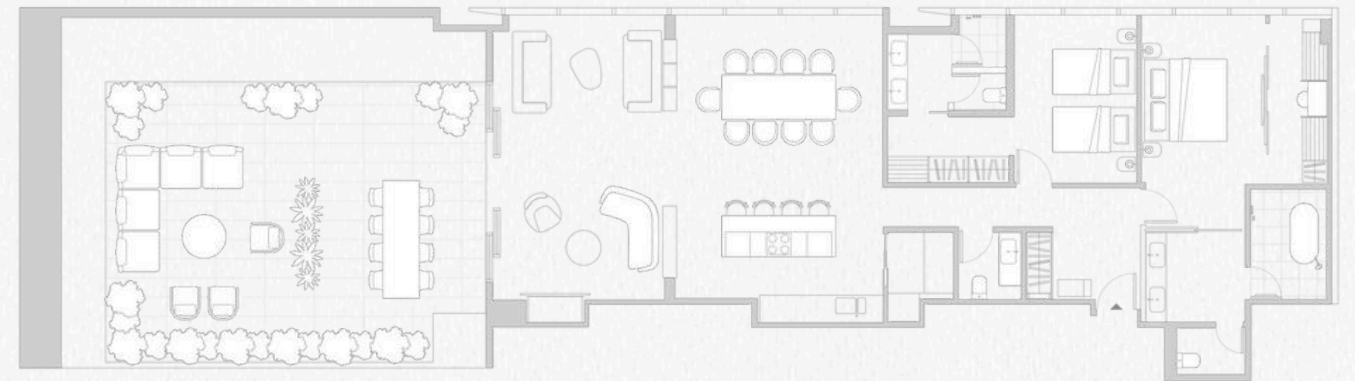
High Speed Wi-Fi

In Room Amenities

Nespresso® Coffee Machine, T2 Tea, complimentary minibar, Miele 4 burner cooktop, pots and pans, Miele Combi oven, Fisher & Paykel fridge & freezer, Fisher & Paykel 38 bottle wine cabinet, Smeg kettle & toaster, rice cooker, Breville blender, Miele dishwasher, Dyson hairdryer, washer/ dryer, iron and ironing board, safe deposit box, Sealy mattress, extensive pillow menu, Appelles bathroom toiletries

Floor Plan

Gross Area | 150m²





◆ Your Place Lanson Place

From a full buffet breakfast to dinner and cocktails at our signature restaurant, your stay offers everything you could desire. Our premium hotel facilities include a 24-hour fitness centre, 20-metre indoor heated swimming pool and spa, co-working space, in-room dining and the exceptional personal service we are renowned for.

Chronicle 502 Bar & Dining

Our signature restaurant celebrates Australia's finest seasonal flavours. Start your day with one of our grab-and-go pastries and freshly made ST. ALi coffee or T2 brew. Our exquisite all-day dining menu offers a delightful array of culinary creations complemented by a curated wine list, exclusive cocktails, local craft beers and premium spirits. We prioritise sourcing products locally from Victorian growers and producers.

Albert Lounge

Start your Melbourne adventure with an indulgent buffet breakfast served daily in Albert Lounge on level one. Re-fuel with traditional breakfast favourites alongside daily specials from our Executive Chef.

In-room Dining

For the ultimate convenience, room service is available for guests wishing to dine in the privacy of their own rooms. Breakfast, lunch and dinner are all freshly made in our kitchen and delivered to your door.



Albert Lounge, 1st floor

Dining at
Lanson Place
Parliament Gardens



Boardroom, Ground floor

Thoughtfully curated events
where every experience is
one to remember.

The Boardroom

Located on the ground level comfortably seating 10 guests, the boardroom provides the perfect setting for your next business meeting or private dining event. Equipped with in-built, seamless technology to complement your event.

Albert Lounge

Framed by unique heritage windows, the beautifully styled and light-filled Albert Lounge provides a unique space to host private lunches or dinners, cocktail parties or corporate function.

Chronicle 502 Bar & Dining

Our hotel's signature restaurant can be transformed into a private event space. Talk to us about creating a unique event to celebrate your special occasion, with a menu personally designed by our Executive Chef.

Penthouses

With abundant indoor and outdoor spaces, and a stunning backdrop of Parliament Gardens and the city skyline, our two penthouses deliver Melbourne's most exclusive setting for an event of elevated style.

Swimming Pool & Spa

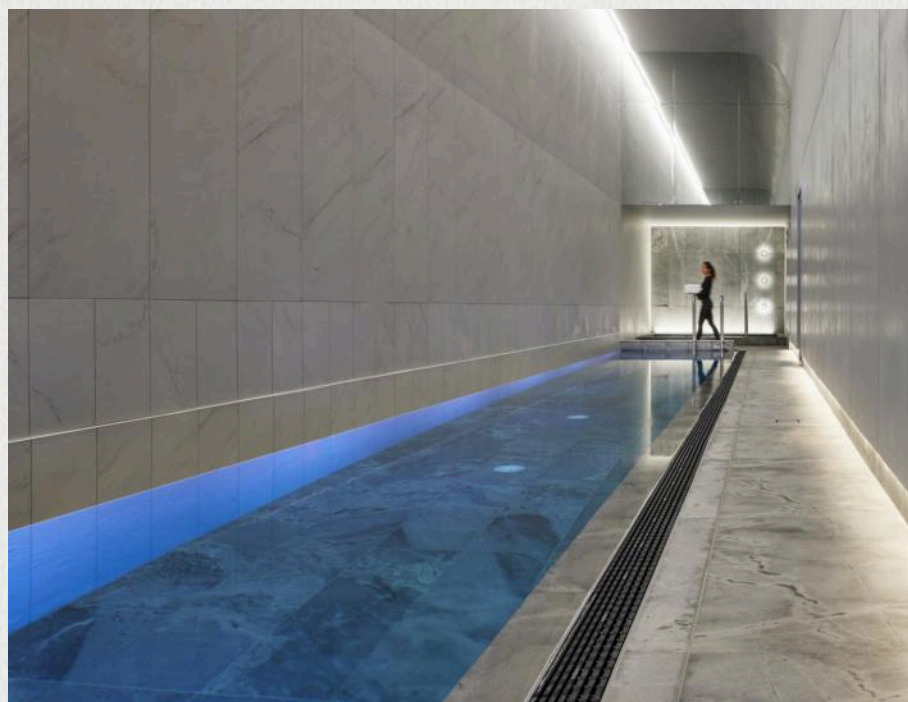
Immerse yourself in the calming waters of our heated 20-metre indoor swimming pool and spa.

Fitness Centre

All the professional equipment you need to support your fitness journey during your stay in a space designed for wellbeing. Available 24 hours for all in-house guests.

Co-working Space

When you need a dedicated place to focus on work, Albert Lounge is available after breakfast, providing a tranquil and productive environment.



Relaxing, Recharging and Co-working

At Lanson Place Parliament Gardens, we invite you to immerse yourself in the finest Melbourne has to offer. Whether you're energizing in our fitness centre or finding inspiration in our serene lounge, every detail is designed with your comfort in mind. To ensure your stay is nothing short of extraordinary, our dedicated hosts are available around the clock, ready to assist you at every turn.

Getting Around

You'll find Melbourne an easy city to navigate and staying at Lanson Place Parliament Gardens places everything at your door. Located moments from Spring Street at the top of the CBD, most of the city's key attractions are within walking distance. The free City Circle tram route can be found just a few steps from our entrance, ready to take you around the city and introduce you to its highlights.



Parliament Train Station

2 mins walk



Part of the City Loop, this underground station connects you to every station on Melbourne's train network. Located a short walk across Parliament Gardens and Spring Street.

Princess Theatre

4 mins walk



An iconic gem in Melbourne's cultural landscape, the Princess Theatre hosts world-class performances, offering an enchanting experience of rich history and theatrical grandeur.

Melbourne Museum

9 mins walk



Set within the stunning Carlton Gardens, the fascinating Melbourne Museum spans multiple levels and diverse collections to tell Victoria's stories – from culture and history to the natural environment.

Queen Victoria Market

22 mins walk or
6 mins drive



A historic landmark in the heart of Melbourne, Queen Victoria Market offers a vibrant atmosphere where you can discover an array of fresh produce, gourmet delights, and unique artisanal goods.

MCG

24 mins walk or
10 mins by tram



Known locally as 'The G', the Melbourne Cricket Ground is the home of AFL, cricket and the centre of the city's sporting culture. Make us your home base. Skip the hassle of driving or parking and focus on enjoying the excitement.

Melbourne Airport

40 mins drive



It's an easy and direct drive to the airport from the city. Talk to our friendly reception team about arranging a taxi.

Transport

Wilson Parking (90 Victoria Parade, Melbourne)

wilsonparking.com.au

Public Transport Victoria

ptv.vic.gov.au

Metro Trains

metrotrains.com.au

Yarra Trams

yarratrams.com.au

Skybus

skybus.com.au

Tourist information

Visit Victoria

visitvictoria.com

City of Melbourne

melbourne.vic.gov.au/about-melbourne/for-visitors

Tourism Australia

australia.com

Lanson Place Parliament Gardens, Melbourne
502 Albert Street, Melbourne VIC 3002, Australia

+61 3 8638 7800

lansonplace.com/parliamentgardens



LANSON PLACE

PARLIAMENT GARDENS

MELBOURNE

lansonplace.com